

Bead Ruptor Bead Mill Homogenizers

*Lyse the toughest samples
in seconds*



Bead Ruptor 24

BEAD MILL HOMOGENIZER

ORDER NO. 19-040



96 Strip Well Tube Carriage Kit ORDER NO. 19-010-330

- > 96 x 1.2 mL strip well tubes
- > Includes tube carriage that holds the 1.2 mL strip well tubes firmly in place during processing.



1.5 mL Microtube Carriage Kit ORDER NO. 19-010-310S

- > 24 x 1.5 mL microtubes
- > Includes Bead Ruptor Finger Plate that holds the 1.5 mL microtubes firmly in place during processing.



2 mL Tube Carriage Kit ORDER NO. 19-010-310

- > 24 x 2 mL or 24 x 0.5 mL skirted tubes
- > Includes Bead Ruptor Finger Plate that holds the 2 mL tubes firmly in place during processing.



7 mL Tube Carriage Kit ORDER NO. 19-010-320

- > 12 x 7 mL tubes
- > Includes Bead Ruptor Finger Plate that holds the 7 mL tubes firmly in place during processing.



30 mL Tube Carriage Kit ORDER NO. 19-345-035

- > 6 x 30 mL tubes
- > Patent pending snap-in tube carriage for 30 mL samples. Kit includes tube carriage and lock ring.



50 mL Tube Carriage Kit ORDER NO. 19-345-050

- > 3 x 50 mL tubes
- > Patent pending snap-in tube carriage for 50 mL samples. Kit includes tube carriage and lock ring.

- Processing Range:** 25 µL to 50 mL
- Power Rating:** 100-230 VAC/50-60 Hz
- Dimensions:** 15" W x 17" D x 13" H
- Weight:** 29 kg (65 lbs.)
- Compliance:** CE
- Run Time:** 1 s - 9:59 m
- Programs:** 99
- Cycles:** 1-10
- Performance Range:** 0.8 m/s - 8 m/s in increments of 0.15 m/s



Omni Bead Ruptor 24 is ideally suited for:

- > DNA/RNA extraction
- > Tissue homogenization
- > Enzyme isolation
- > Protein purification
- > Food safety testing
- > Drug detections
- > qPCR, RT-PCR, electrophoresis, mass spectrometry

Quickly disrupt the toughest samples — including tissues, hair, teeth, bone and skin

*Compelling performance
at a compelling price*

Bead Ruptor 12

BEAD MILL HOMOGENIZER ORDER NO. 19-050



Processing Range:

25 µL to 6 mL

Power Rating:

100-230 VAC/50-60 Hz

Dimensions:

12" W x 17" D x 14.5" H

Weight: 24 kg (54 lbs.)

Compliance: CE

Run Time: 1 - 99 seconds

Programs: 1

Cycles: 1

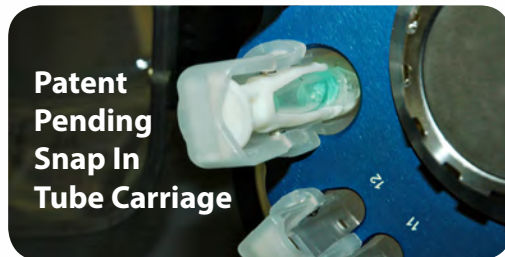
Performance Range:

3 m/s - 5 m/s in
increments of 1 m/s



*includes Tube Carriage
for 2 mL and 7 mL tubes*

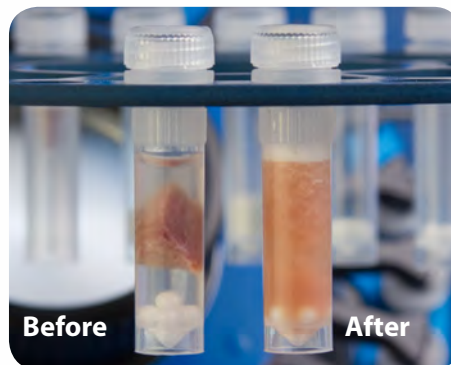
- > Holds 12 x 2 mL or 0.5 mL tubes, and/or 4 x 7 mL tubes
- > Includes semi-permanent ring and assembly tools



Omni Bead Ruptor 12 is ideally suited for:

- > Homogenizing up to 16 samples in seconds
- > Reproducible extraction of proteins and nucleic acids
- > Simultaneously processing 12 x 2 mL, 4 x 1.5 mL, and 4 x 7 mL samples

*Omni lysing tubes
are ideally suited
for nucleic acid, drug,
protein, enzyme,
and virus extractions.*



Efficiently lyse with & without a buffer:

- > Human tissues
- > Soil & sediments
- > Animal tissues
- > Hair & feces
- > Plant & food
- > Drugs
- > Micro-organisms
- > Polymers & lotions

*Sample: 50 mg mouse heart; Tube: 2 mL;
Beads: 2.8 mm ceramic; Buffer: 1 mL H₂O;
Settings: High, 2 x 30 sec. with 10 sec. pause*



1.5 mL

2 mL



7 mL



30 mL

Omni offers a selection of Beads and Tubes for ultimate versatility

A variety of bead media are available for different sample types. Omni's various tube sizes fit a range of sample volumes. With the Bead Ruptor's vigorous and uniform shaking, all samples are consistently homogenized.

A selection of our best-selling Bead Kits:

2 mL PRE-FILLED BEAD MILL TUBES

ORDER NO.

Hard Tissue Grinding Mix, 2 mL	19-620
Micro-organism Lysing Mix, 2 mL	19-621
Soft Tissue Homogenizing Mix, 2 mL	19-627
Hard Tissue Homogenizing Mix, 2 mL	19-628

7 mL PRE-FILLED BEAD MILL TUBES

ORDER NO.

Soft Tissue Homogenizing Mix, 7 mL	19-677
Hard Tissue Homogenizing Mix, 7 mL	19-678
Hard Tissue Grinding Mix, 7 mL	19-670

30 mL PRE-FILLED BEAD MILL TUBES

ORDER NO.

Hard Tissue Grinding Mix, 30 mL	19-6350
---------------------------------	---------

> For more information —
www.bio-budget.com

Bio-Budget Technologies GmbH
Dießemer Bruch 150, 47805 Krefeld
TEL 02151 - 65 20 830

Bio-Budget is a partner
of Biolabproducts GmbH

